

English

Preps

Creating Files From Adobe InDesign CS for Windows

Copyright

Copyright © 2004 Creo Inc. All rights reserved. Data subject to change without notice.

Internal 731-00241A-EN Rev A

Creo and the Creo logo are trademarks or registered trademarks of Creo Inc. The Creo products mentioned in this document are trademarks or service marks of Creo Inc. and may be registered in certain jurisdictions. Adobe and PostScript are trademarks of Adobe Systems Inc., are registered in the U.S. Patent and Trademark Office, and may be registered in other jurisdictions as well. Acrobat, the Acrobat logo, and Illustrator are trademarks of Adobe Systems Incorporated, which may be registered in certain jurisdictions. Microsoft, Windows, and Windows NT are registered trademarks or trademarks of Microsoft Corporation in the U.S. and/or other countries. Other company and brand, product, and service names are for identification purposes only and may be trademarks or registered trademarks of their respective holders.

No copying, distribution, publication, modification, or incorporation of this document, in whole or part, is permitted without the express written permission of Creo Inc. In the event of any permitted copying, distribution, publication, modification, or incorporation of this document, no changes in or deletion of author attribution, trademark legend, or copyright notice shall be made. No part of this document may be reproduced, stored in a retrieval system, published, used for commercial exploitation, or transmitted, in any form by any means, electronic, mechanical, photocopying, recording, or otherwise, without the express written permission of Creo Inc. This document is distributed in Adobe Systems Incorporated's PDF (Portable Document Format). You may reproduce the document from the PDF file for internal use. Copies produced from the PDF file must be reproduced in whole.

.....
Creo Inc.
3700 Gilmore Way
Burnaby, B.C., Canada
V5G 4M1
Tel: +1.604.451.2700
Fax: +1.604.437.9891
<http://www.creo.com>

.....
Revised May 2004

Creating Files for Use in Preps

In order for Preps to correctly process an Adobe® InDesign® CS document as a source file, you must export the document as a device-independent PostScript® file. Device-independent files are composite PostScript files that comply with the Adobe Document Structuring Convention (ADSC), which means they do not contain any output device-specific information and are page independent (all information required for each page is contained within that page).

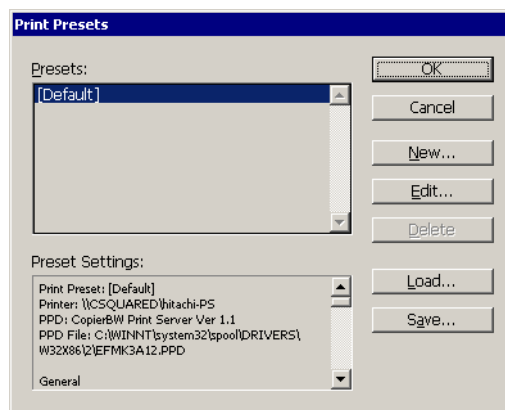
This document outlines recommended settings for creating the most compatible device-independent PostScript files for use with Preps. Other prepress software may require different settings.

Creating a Printer Style

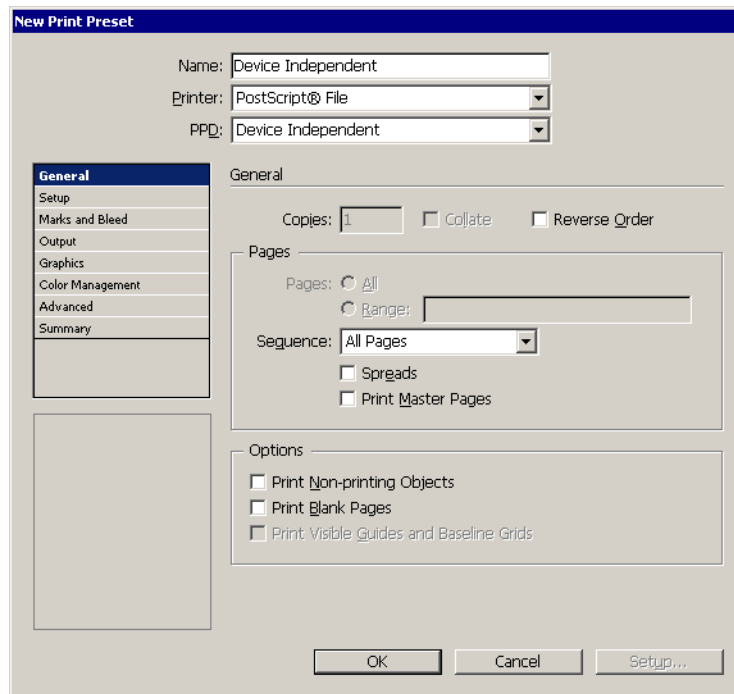
To ensure consistent printing to file, we recommend that you create a printer style. A printer style allows you to repeatedly use a range of selected printer options without reconfiguring options every time you create a PostScript file.

To create a printer style:

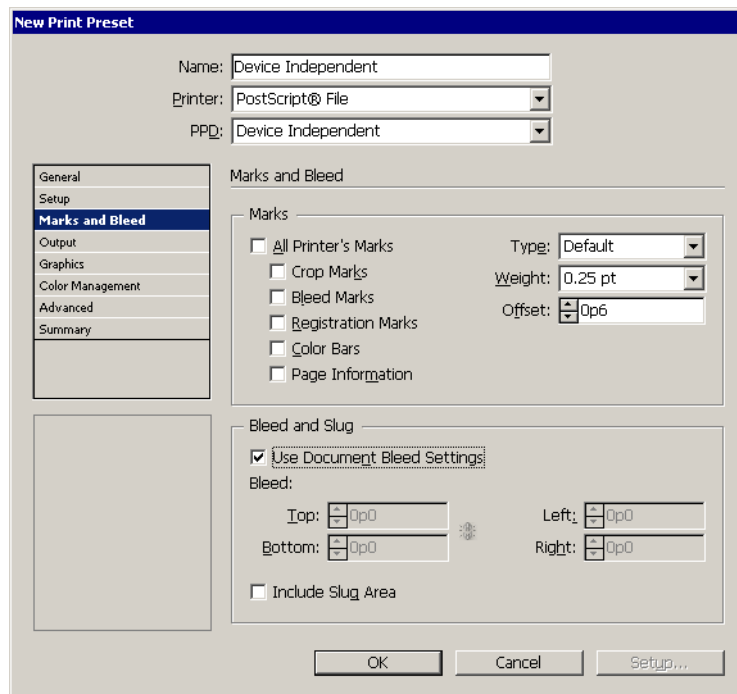
1. From the **File** menu, select **Print Presets > Define**.



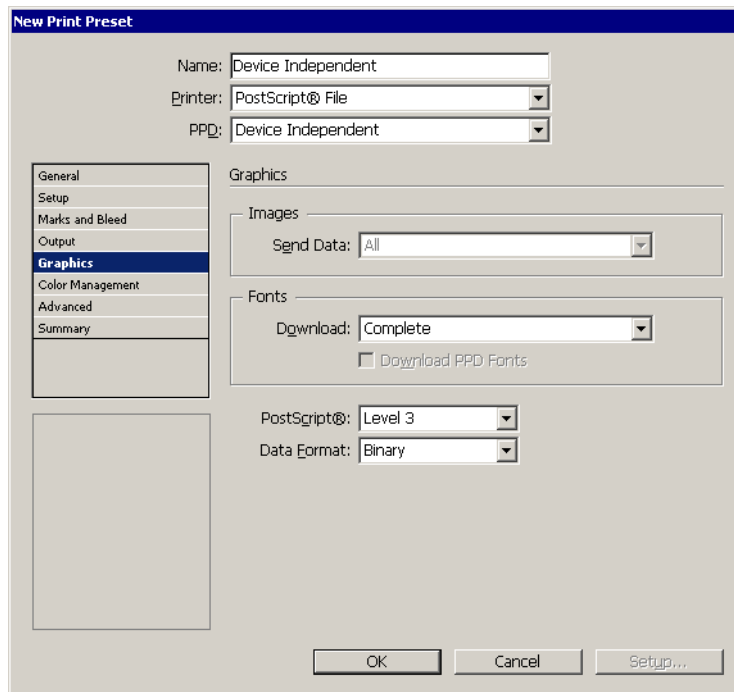
2. Click **New**.



3. In the **Name** box, type a name for the printer style (for example, Device Independent).
4. From the **Printer** list, select **PostScript® File**.
5. From the **PPD** list, select **Device Independent**.
6. Select the page sequence and options as required.
7. From the main options list on the left side of the New Print Preset dialog box, select **Marks and Bleeds** (there are no options to select in the **Setup** and **Output** areas when you are creating a device-independent PostScript file).

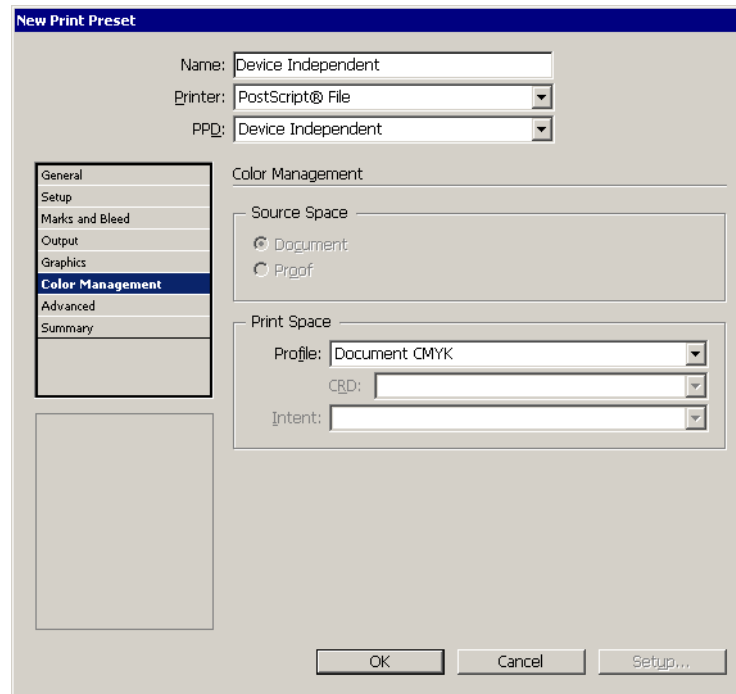


8. In the **Marks** area, clear all of the check boxes.
9. In the **Bleed and Slug** area, select the **Use Document Bleed Settings** check box if appropriate, or clear this check box and type the bleed amount in the boxes. The default setting is **0**. We recommend 0.125 inches (9 points).
10. From the main options list, select **Graphics**.

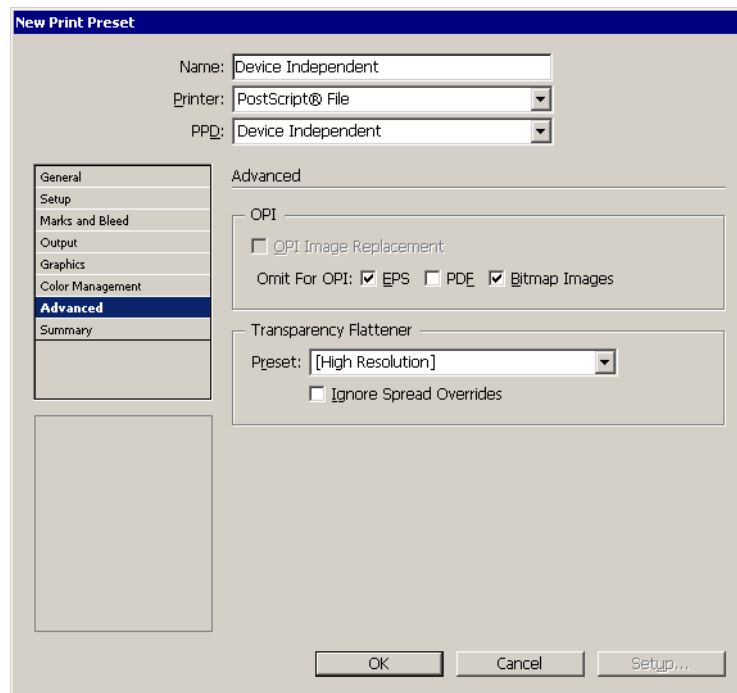


11. In the **Fonts** area, from the **Download** list, select **Complete**.
12. From the **PostScript®** list, select **Level 2** or **Level 3**, depending on the capabilities of your RIP.

13. From the **Data Format** list, select **Binary**.
14. From the main options list, select **Color Management**.



15. In the **Print Space** area, from the **Profile** list, select **Document CMYK**.
16. From the main options list, select **Advanced**.



17. In the **OPI** area, select the **OPI Image Replacement** check box if required. This option allows InDesign to perform image replacement for low-resolution placed EPS files. When creating files for use in Preps, we recommend clearing this check box.
18. If you want Preps XL, Preps Pro, or an OPI server to replace low-resolution images, select the **Omit For OPI: EPS**, and **Bitmap Images** check boxes, and clear the **PDF** check box.
19. In the **Transparency Flattener** area, in the **Style** box, select **(High Resolution)**.



Note: When flattening transparent objects, spot colors may convert to CMYK.

20. Clear the **Ignore Spread Overrides** check box.
21. Click **OK**.

The printer style is saved.

Using a Printer Style

To use the printer style to create a PostScript file:

- From the **File** menu, select **Print Presets > Device Independent** (style name).

You have created a prepress file from an InDesign CS document. You can add the file to a Preps job.